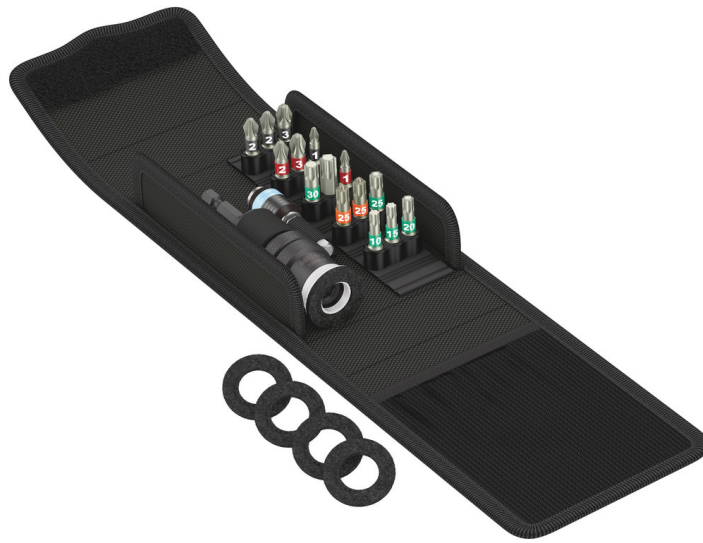


Patio construction set T 1, 21 pieces

Tool sets for wood applications



EAN:	4013288219510	Size:	140x115x55 mm
Part number:	05134021001	Weight:	340 g
Article number:	Terrassenbau-Set T 1	Country of origin:	CZ
		Customs tariff number:	82079030

- High-quality 17-piece tool set for evenly flush countersunk screw heads for decking in patio construction
- Bit holder with adjustable screw depth limitation and protective felt ring for surface protection
- 15 bits (TORX®, PH, PZ) made from stainless steel to prevent extraneous rust plus 3888/4/1 K Rapidaptor stainless steel bit holder
- Take it easy tool finder: colour coding according to profile and size
- Compact folding bag with Wera 2go compatibility incl. 4 spare felt rings

Compact Wera tool set with the 17 most common screwdriving tools for patio construction. Bits in stainless steel design prevent extraneous rust. With extra smart bit holder, which enables a uniform depth thanks to the variable screw depth limitation, and prevents damage to decking with the fitted felt ring.

Web link

https://products.wera.de/en/tools_by_trade_tool_sets_for_wood_applications Terrassenbau-set_t_1.html

Wera - Terrassenbau-Set T 1
05134021001 - 4013288219510


Wera Werkzeuge GmbH
Korzter Straße 21-25
D-42349 Wuppertal
Tel: +49 (0)2 02 / 40 45-0
E-Mail: info@wera.de


Patio construction set T 1, 21 pieces





Tool sets for wood applications


Set contents:


 **881/4/1**
 1) 1 x 1/4" x 90 mm
 1) The spare part kit with 5x felt rings can be ordered with the code number 05130003001.

 **3888/4/1 K**
 05071100001 1 x 1/4" x 50 mm

 **3851/1 TS PH**
 05071010001 1 x PH 1 x 25 mm
 05071011001 1 x PH 2 x 25 mm
 05071012001 1 x PH 3 x 25 mm

 **3855/1 TS PZ**
 05071020001 1 x PZ 1 x 25 mm
 05071021001 2 x PZ 2 x 25 mm
 05071022001 1 x PZ 3 x 25 mm

 **3867/1 TS TORX®**
 05071032001 1 x TX 10 x 25 mm
 05071033001 1 x TX 15 x 25 mm
 05071034001 1 x TX 20 x 25 mm
 05071035001 1 x TX 25 x 25 mm
 05071037001 1 x TX 30 x 25 mm
 05071038001 1 x TX 40 x 25 mm

 **3867/1 TS P TORX®**
 05071028001 2 x TX 25 x 25 mm

 **9201**
 4 x 27 mm

Evenly flush countersinking of screws

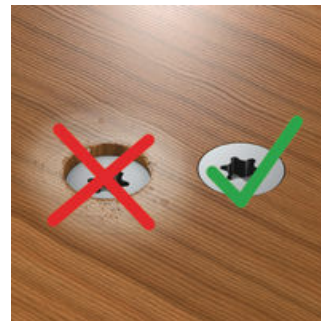


Bit holder for evenly flush countersunk screws in patio construction



The 881/4/1 bit holder allows for evenly flush countersinking of screws in decking when building patios. The screw depth can be adjusted as required. This prevents screws from being countersunk too deep.

Avoids damage caused by rot



The screw head is evenly flush with the decking, therefore so-called "water nests", which usually lead to rot, are avoided.

Individual screw depth



The required screw depth is set using the counter thread.

Web link

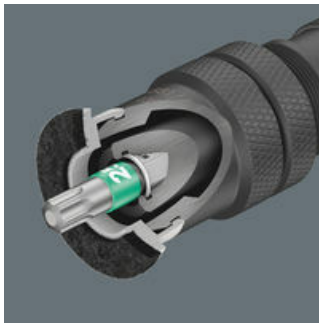
https://products.wera.de/en/tools_by_trade_tool_sets_for_wood_applications Terrassenbau-set_t_1.html

Wera - Terrassenbau-Set T 1
 05134021001 - 4013288219510

Wera Werkzeuge GmbH
 Korzter Straße 21-25
 D-42349 Wuppertal
 Tel: +49 (0)2 02 / 40 45-0
 E-Mail: info@wera.de

Tool sets for wood applications

Bit mounting with retaining ring



Proven holder design, optimal fitting of the tool in the holder. Particularly robust for series applications.

Surface protection



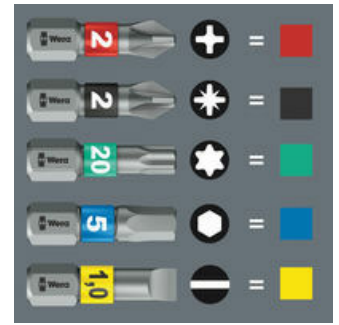
The exchangeable felt ring in the front of the bit mounting prevents brush marks on patio decking.

Stainless Steel Bits



Wera stainless steel bits are manufactured out of stainless steel so unsightly rust can be avoided. The stainless steel bits from Wera are vacuum ice-hardened and have the hardness and strength needed for screw connections. There are no limitations to the industrial applications they are suitable for.

"Take it easy" tool finder



"Take it easy" tool finder with colour coding according to profiles and size stamp - for simple and rapid accessing of the required tool.

Web link

https://products.wera.de/en/tools_by_trade_tool_sets_for_wood_applications Terrassenbau-set_t_1.html

Wera - Terrassenbau-Set T 1
05134021001 - 4013288219510

Wera Werkzeuge GmbH
Korzter Straße 21-25
D-42349 Wuppertal
Tel: +49 (0)2 02 / 40 45-0
E-Mail: info@wera.de